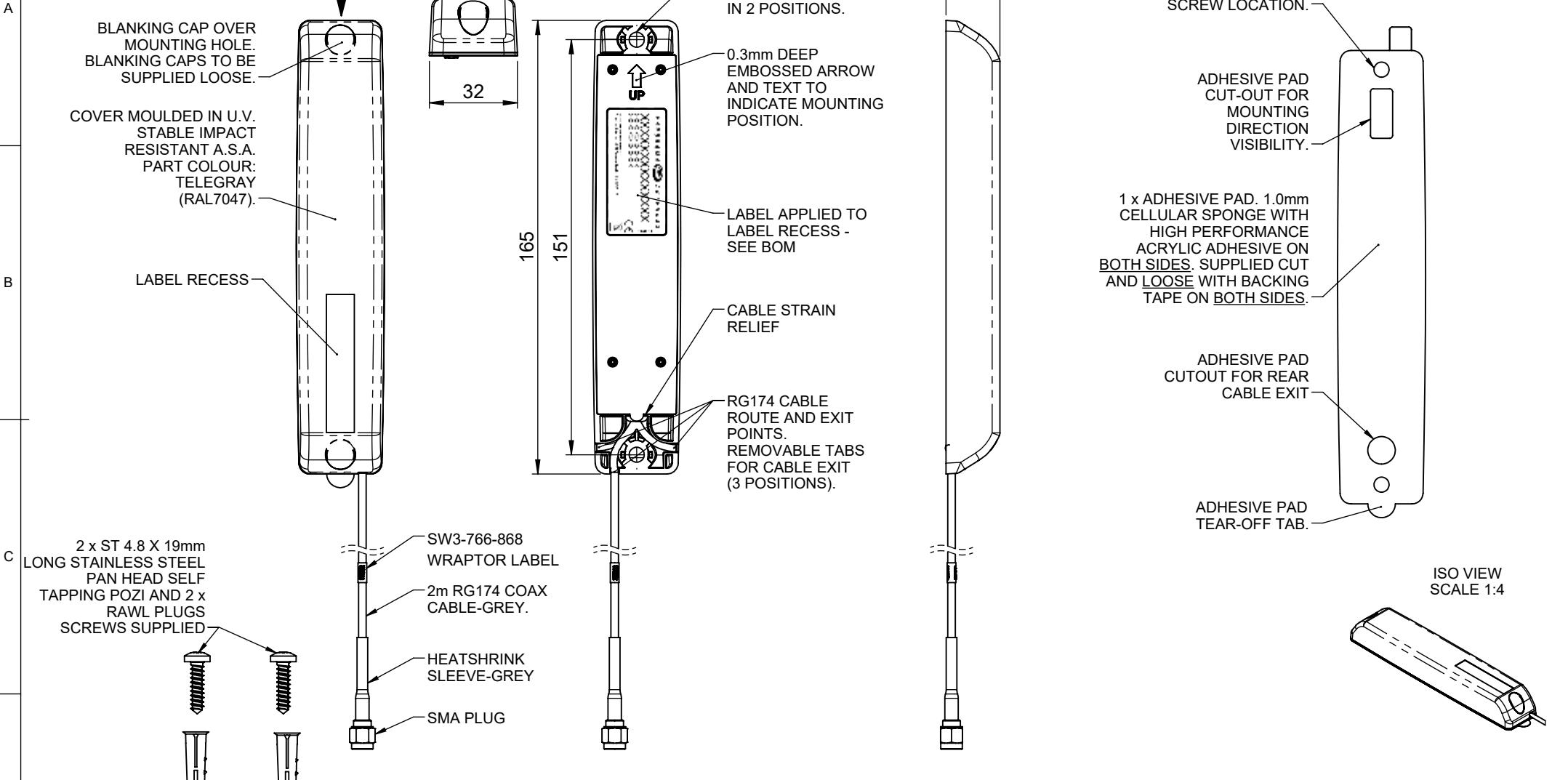


TOLERANCES UNLESS OTHERWISE STATED

0 DEC. PLACE	±0.5	2 DEC. PLACES	±0.1
1 DEC. PLACE	±0.2	ANGULAR	±1°



- NOTES:
- SAMPLES MUST BE APPROVED BY PANORAMA ANTENNAS Q.C. BEFORE COMMENCING PRODUCTION.
 - ALL MATERIALS SUPPLIED MUST BE RoHS2 (DIRECTIVE 2011/65/EU) COMPLIANT AND MUST NOT CONTAIN ANY SUBSTANCES OF VERY HIGH CONCERN (SVHCs) LISTED UNDER REACH OR POLY-AROMATIC HYDROCARBONS (PAHs), OR PERSISTENT ORGANIC POLLUTANTS (POPs) CONTROLLED BY THE STOCKHOLM CONVENTION.

PRODUCT/ASSEMBLY		1008 - M2M LOW PROFILES		DESCRIPTION		868MHz WALL MOUNT ANTENNA 2m SMAP	
MATERIAL		N/A		APPROVED		JJ	
FINISH		N/A		D.O.CHECK		PE	
01019		A		PRODUCTION ISSUE		SCALE 1:2	
PCN		REV.		DESCRIPTION		DIMENSIONS IN mm	
13/06/2018		IC		DATE		DRN.	
WEIGHT 70g		SHEET 1 OF 1		P		ANTENNAS	