

SAB-342



For use with the L[X]M[X]M4[X]-6-60 Mako® and L[X]M[X]M[X]-6-60 5G Great White® antenna series, the SAB-342 provides a simple mounting solution for fitting these product lines to standard 1.5" / 38mm diameter poles.

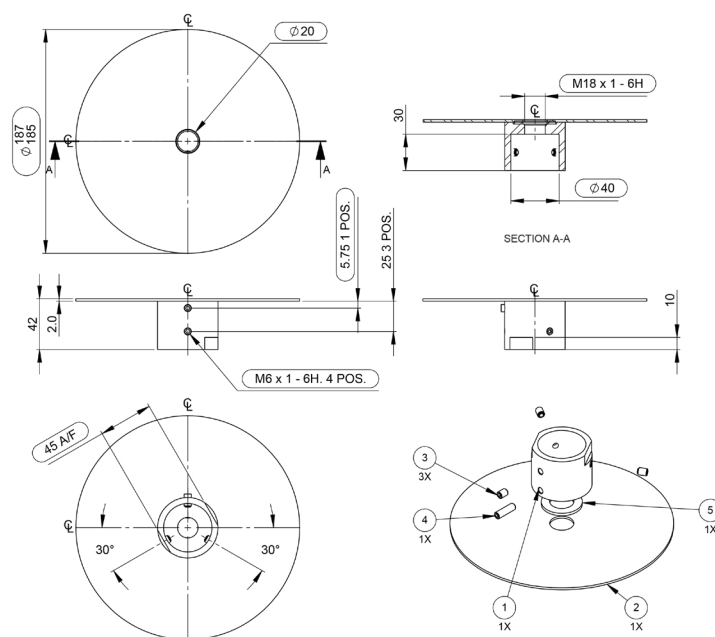
The assembly allows the antenna to be mounted to the top of such a pole with the cables routed inside the pole. The bracket is mounted to the antenna using the M18 mounting thread on the antenna locked in place with a grub screw. The entire assembly is fitted to the 1.5" 38mm pole using 3x additional grub screws.

Mounting these omni-directional antennas on a pole allows for increased elevation and clearance from buildings or other obstructions.

When mounting antennas or bracketry above a roofline or in an elevated position in areas prone to lightning it may be prudent to consider lightning or surge protection.



SAB-342 Shown

Part No.

SAB-342

Mechanical Data

| | |
|-----------------------------|-------------------------------------|
| Mounting Options | Pole mount or mast mount |
| Required Mast Diameter (mm) | 38mm (1.5") |
| Fixings | M6 cup point socket set grub screws |
| Material | Coated stainless steel / aluminium |
| Colour | Black / natural |