

Magnetic Mount Solution for Trials and Drive-Testing

SAB-344

PANORAMA ANTENNAS



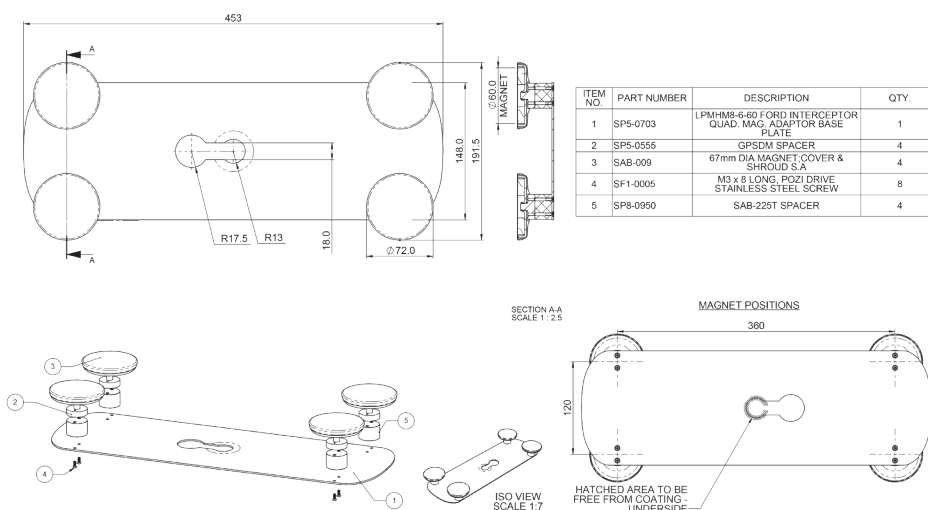
SAB-344

- Magnetic mount adapter plate for Megalodon® range
- For temporary mounting

For use with the L[X]M[X]M8[X]-6-60 and L[X]M[X]M6[X]-6-60 Megalodon® antenna series, the SAB-344 provides a simple temporary magnetic mounting solution drive testing and evaluation.

Using four heavy duty magnets fitted to a stainless steel metal plate, this is a very easy, simple and quick solution that can be fitted anywhere on the vehicle to evaluate the antennas performance without drilling any holes.

Technical Drawing



Product Data

Part No.

SAB-344

Mechanical Data

Length (mm)	453mm (17.8")
Width (mm)	191.5mm (7.5")
Height (mm)	42 (1.65")
Fixing	Magnetic
Plate Material	Stainless steel
Colour	Black powder coat