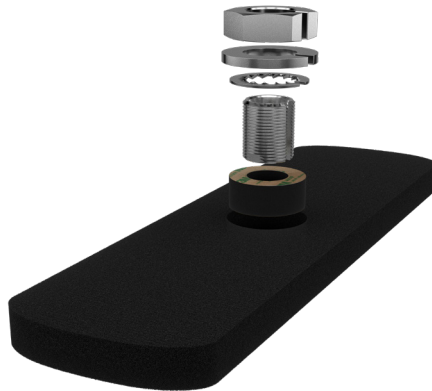


Adaptor Pad for Megalodon® Antenna Series

SAB-346

PANORAMA  ANTENNAS



SAB-346

- Mounting adaptor kit for ribbed, curved or uneven mounting surfaces

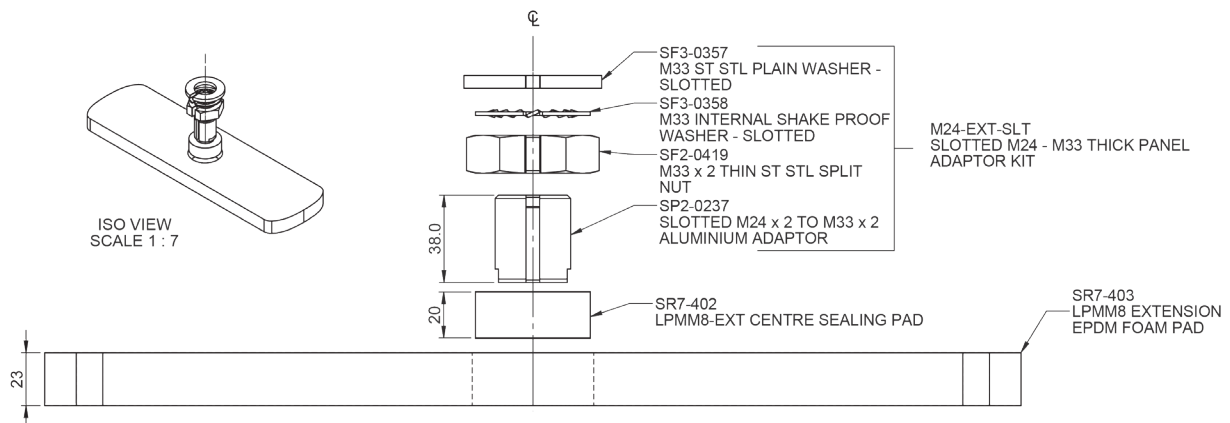
For use with the L[X]M[X]M8[X]-6-60 and L[X]M[X]M6[X]-6-60 Megalodon® antenna series, the thick or uneven panel adaptor provides a solution for mounting this antenna series on uneven, ribbed or very curved roof panels.

Consisting of a closed cell central sealing pad and semi-closed cell main pad the kit protects the entry into the vehicle from ingress while allowing the main pad to accommodate ribs, curvature and uneven features.

The water ingress protection rating for the installation when using this adaptor becomes IPX6 when installed in accordance with the relevant instructions .

Technical Drawing

SAB-346 Shown



Part No.

SAB-346

Mechanical Data

Compression required to seal	3mm (0.12") of inner foam pad or until hard stop
Max panel variation/rib height	Max 20mm (0.8") mounting depth inclusive of panel and rib height, panel material must not exceed 10mm (0.4")
Mounting hole size (mm)	34 (1.33")
Height (mm)	23 (0.9")
Colour	Black
Material	Stainless steel /semi closed EPDM foam / closed cell silicone foam