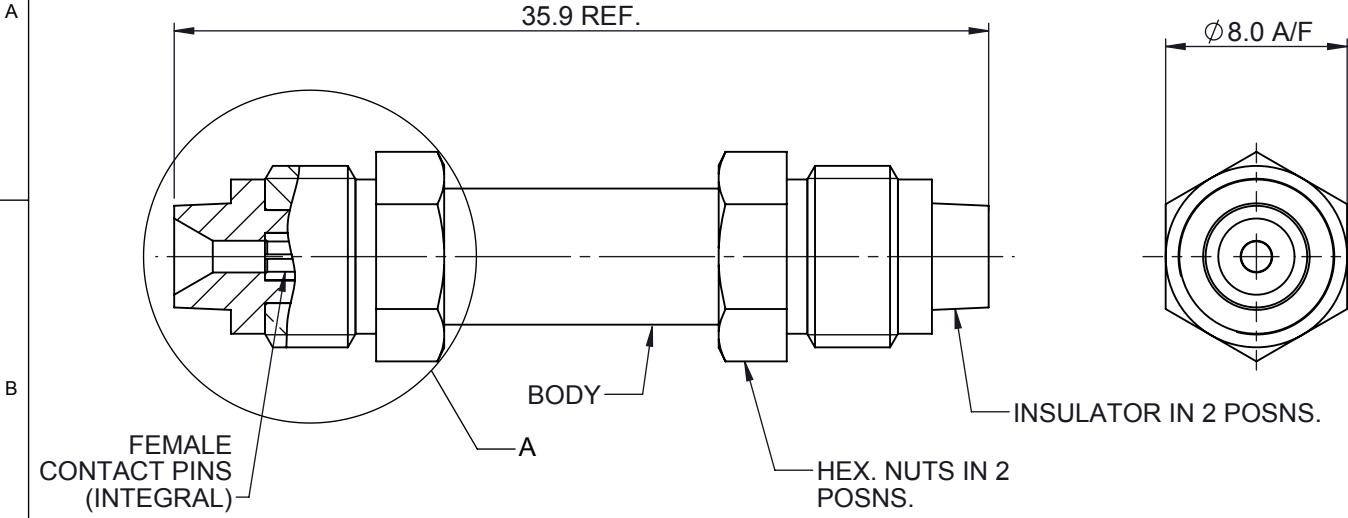
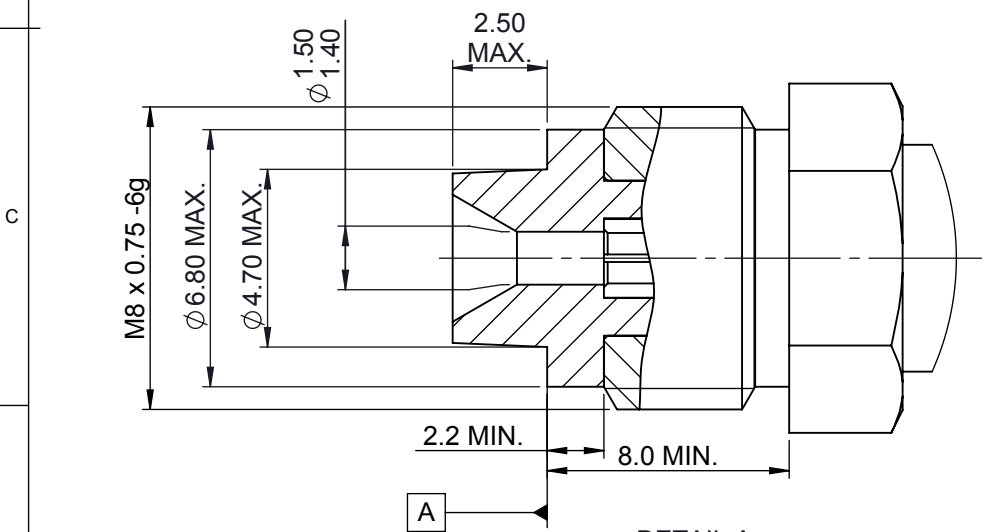


TOLERANCES UNLESS OTHERWISE STATED			
0 DEC. PLACE	±0.5	2 DEC. PLACES	±0.1
1 DEC. PLACE	±0.2	ANGULAR	±1°

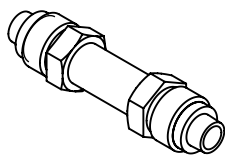


NOTES:

1. IMPEDANCE 50Ω.
2. CONTACT PIN MUST REMAIN CAPTIVE AFTER ASSEMBLY OF CONNECTOR.
3. FINAL CONNECTOR ASSEMBLY MUST CONFORM TO STANDARD INTERFACE DIMENSIONS.
4. MATERIALS:
CONNECTOR BODY & HEX NUT: BRASS CW614N OR APPROVED EQUIVALENT.
CONTACT PIN: BERYLLIUM COPPER CuBe2 OR APPROVED EQUIVALENT.
INSULATOR: PTFE
5. FINISH:
CONNECTOR BODY & HEX NUT: NICKEL (1.27µm MIN.) OVER COPPER (1.27µm MIN.). FINISHED PLATING THICKNESS 2.5-3.0µm.
CONTACT PIN: GOLD PLATED (1.27µm MIN.) OVER NICKEL (1.27µm MIN.)
INSULATOR: SMOOTH MACHINE
6. ALL THREADS TO BE FREE FROM RESTRICTIONS ALONG ENTIRE LENGTHS AFTER PLATING.
7. ALL DIMENSIONS APPLY AFTER PLATING.
8. SAMPLES MUST BE APPROVED BY PANORAMA ANTENNAS Q.C. BEFORE COMMENCING PRODUCTION.
9. ALL PARTS MUST BE RoHS COMPLIANT AND MUST NOT CONTAIN ANY SUBSTANCES OF VERY HIGH CONCERN (SVHCs) LISTED UNDER REACH OR POLY-AROMATIC HYDROCARBONS (PAHs), OR PERSISTENT ORGANIC POLLUTANTS (POPs) CONTROLLED BY THE STOCKHOLM CONVENTION.
10. IN ORDER TO ASSURE COMPLIANCE WITH THE USA DODD-FRANK ACT (SECTION 1502) TIN, GOLD, TANTALUM AND TUNGSTEN CONTAINED IN PANORAMA PRODUCTS MUST BE FULLY TRACEABLE TO A SMELTER APPROVED BY THE CONFLICT-FREE SOURCING INITIATIVE (www.conflictfreesmelter.org).



DETAIL A
FME INTERFACE
SCALE 5 : 1



ISO VIEW
SCALE 1:1

PRODUCT/ASSEMBLY CONNECTORS		DESCRIPTION FME (f) - FME (f) ADAPTOR			
MATERIAL SEE DRAWING		APPROVED KD	DO.CHECK PE	SCALE 4:1	DIMENSIONS IN mm
FINISH SEE DRAWING					
WEIGHT 2.3 g	SHEET 1 OF 1				

01019	2	REDRAWN IN 2D AND 3D CAD. NOTES UPDATED.	23/03/2015	AR
PCN	REV.	DESCRIPTION OF CHANGE	DATE	DRAWN
REVISIONS				