

Inbuilding

CMC-7-60 Range

Wideband Ceiling Mount Antenna

20/03/2015 V2



- Low profile ceiling mount design
- Highly efficient wideband coverage
- Flexible Plenum rated cable
- Low PIM

The CMC-7-60 range of ceiling antennas offer a compact and robust way to provide optimum in-building or DAS coverage for the networks of today and tomorrow. Concealed beneath the flame retardant, halogen-free antenna housing is a highly efficient wideband element capable of supporting 2G/3G/4G/WLAN and WIMAX networks from 698-960MHz and 1710-6000MHz.

Suitable for indoor or outdoor use the antenna only requires one mounting hole for installation.

The antenna is supplied with a 1.2m (4') or 1.8m (6') Times Microwave TFT-LF 402 jumper cable for easy connection. This cable is Plenum rated, resistant to damage and is amongst the most flexible low PIM cables available.



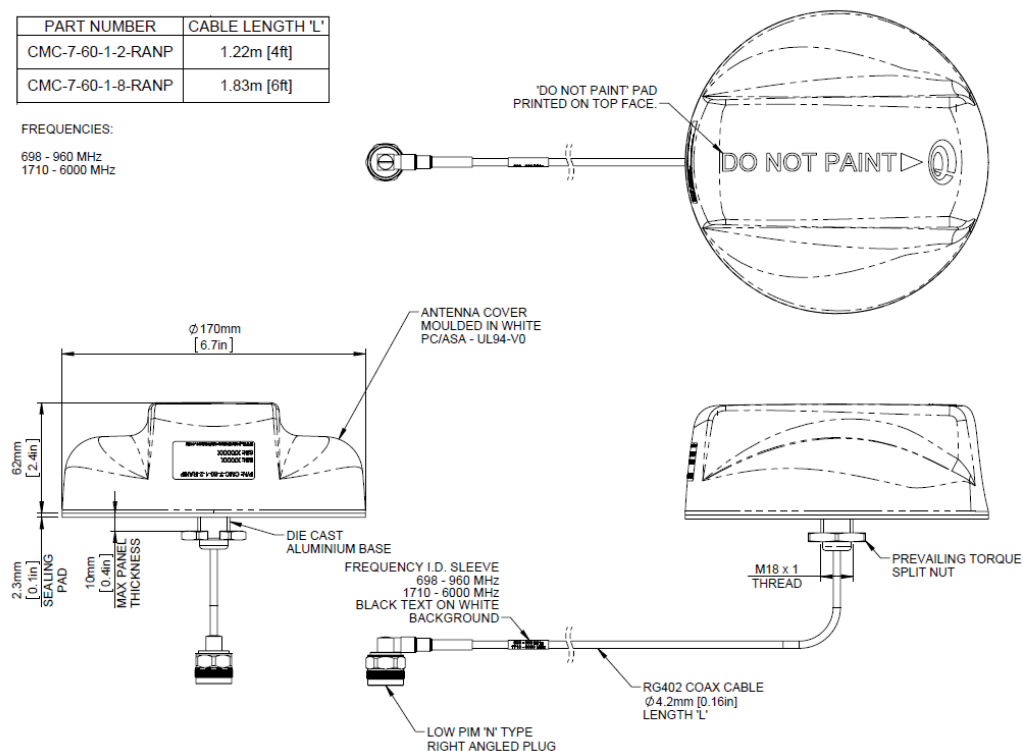
This product features Panorama Antennas' PIM Guard Technology and will meet or exceed a third order intermodulation level of > -140dBc (2x 20W carrier)*

Technical Specification

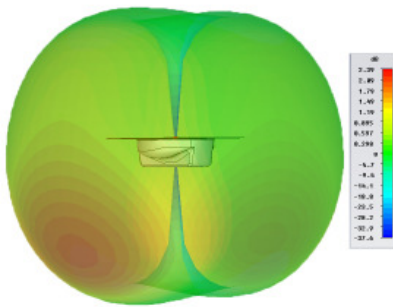
PART NUMBER	CABLE LENGTH 'L'
CMC-7-60-1-2-RANP	1.22m [4ft]
CMC-7-60-1-8-RANP	1.83m [6ft]

FREQUENCIES:

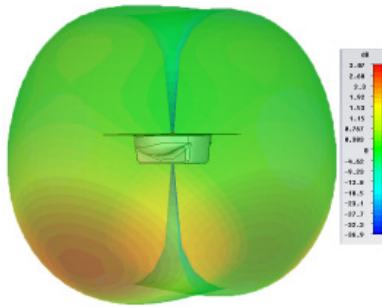
698 - 960 MHz
1710 - 6000 MHz



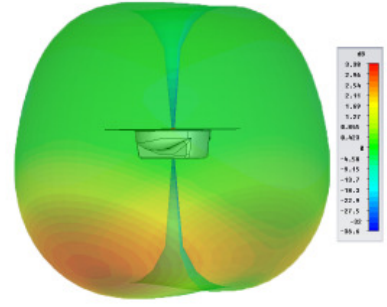
3D Gain Plot E Plane (700 MHz)



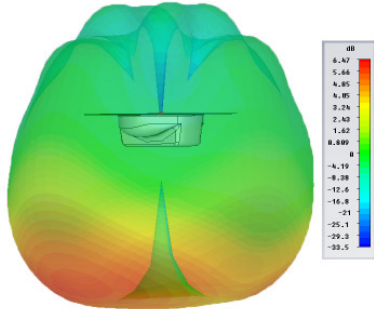
3D Gain Plot E Plane (800MHz)



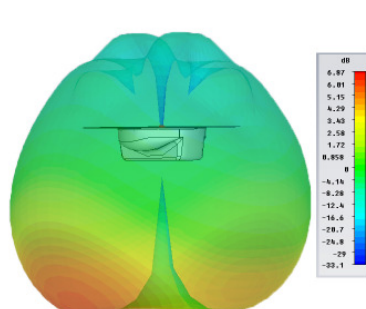
3D Gain Plot E Plane (900MHz)



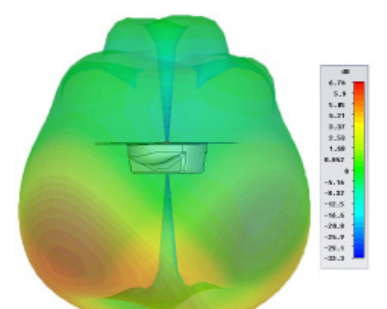
3D Gain Plot E Plane (1800MHz)



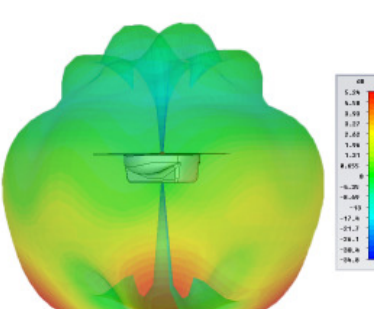
3D Gain Plot E Plane (1900MHz)



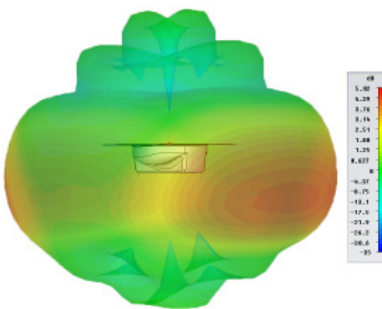
3D Gain Plot E Plane (2100MHz)



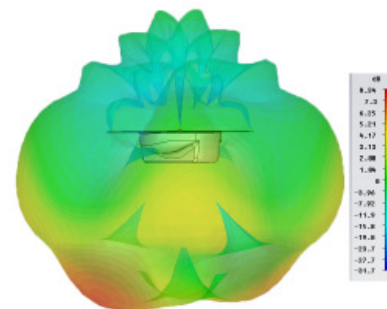
3D Gain Plot E Plane (2400MHz)



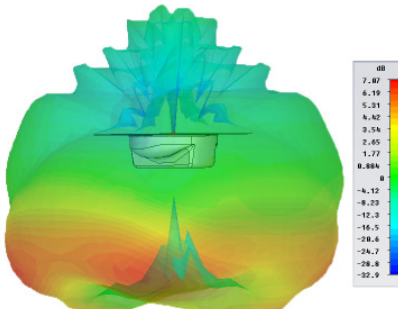
3D Gain Plot E Plane (2600MHz)



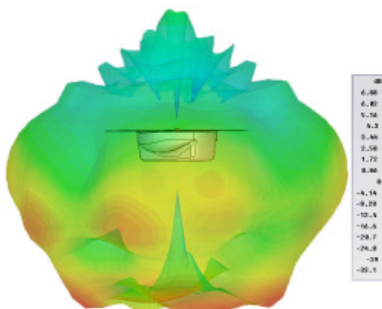
3D Gain Plot E Plane (3500MHz)



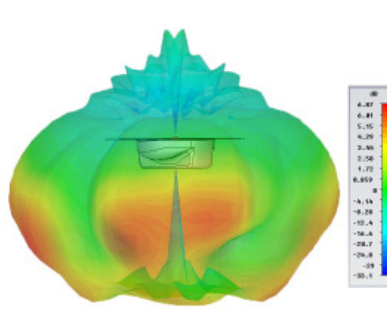
3D Gain Plot E Plane (4900MHz)



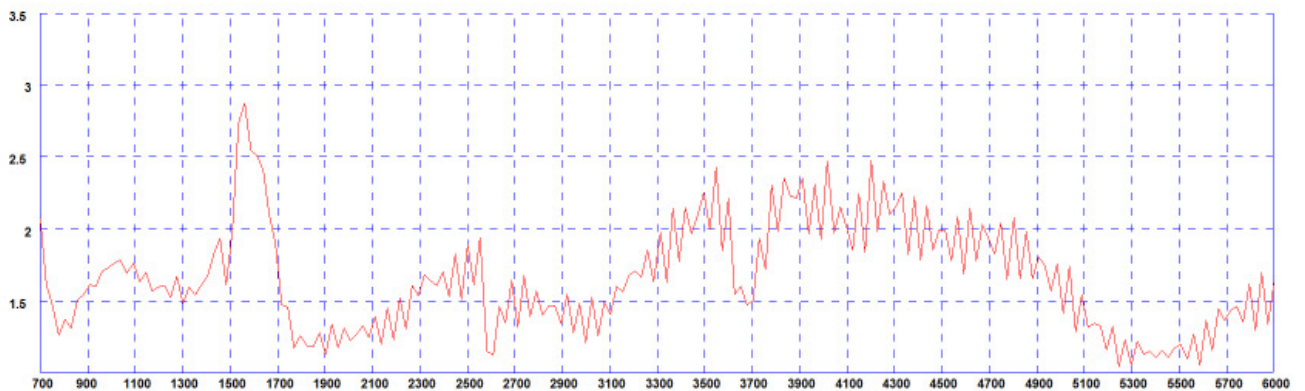
3D Gain Plot E Plane (5400MHz)



3D Gain Plot E Plane (5800MHz)

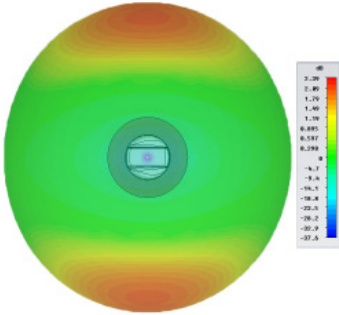


Typical VSWR (700MHz - 6GHz)*

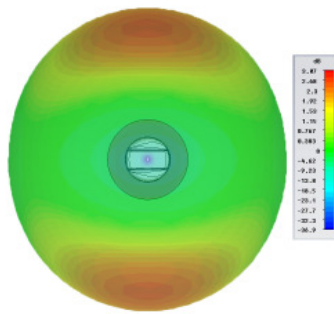


* VSWR measured with 1.8m of TFT-LF 402 cable mounted on a 300mm (1ft) diameter ground plane. Simulated gain and pattern measurements are conducted on a 300mm (1ft) diameter ground plane and exclude cable loss.

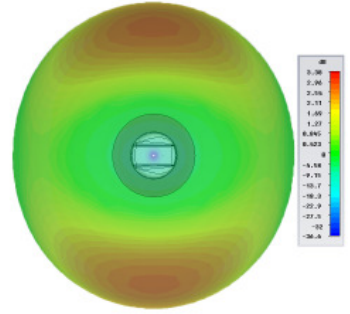
3D Gain Plot H Plane (700 MHz)



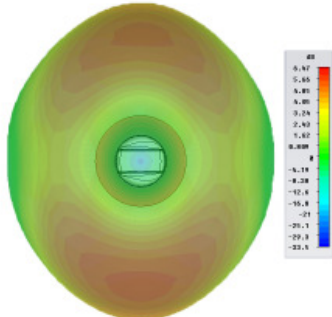
3D Gain Plot H Plane (800MHz)



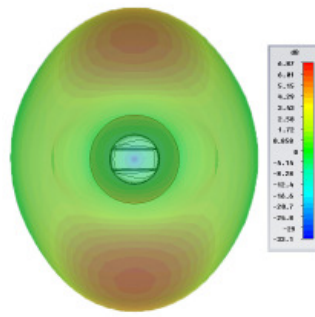
3D Gain Plot H Plane (900MHz)



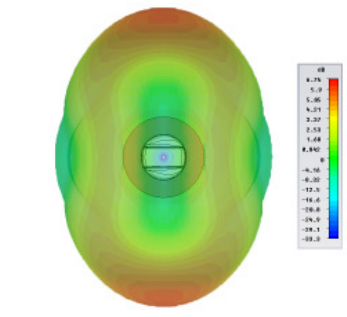
3D Gain Plot H Plane (1800MHz)



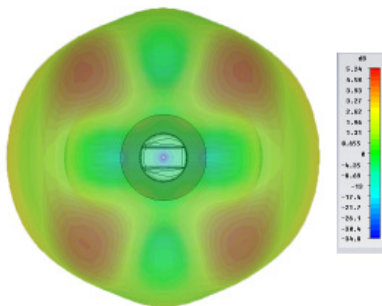
3D Gain Plot H Plane (1900MHz)



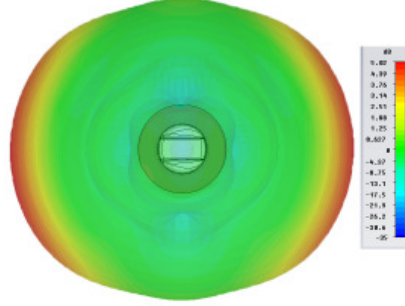
3D Gain Plot H Plane (2100MHz)



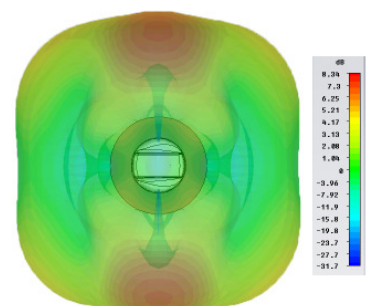
3D Gain Plot H Plane (2400MHz)



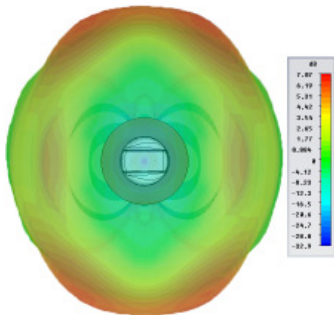
3D Gain Plot H Plane (2600MHz)



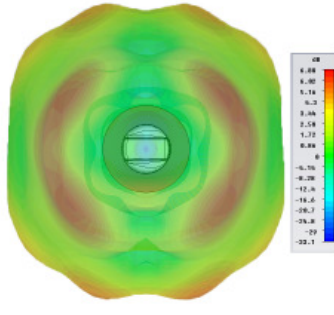
3D Gain Plot H Plane (3600MHz)



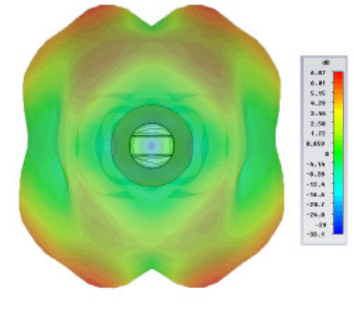
3D Gain Plot H Plane (4900MHz)



3D Gain Plot H Plane (5400MHz)



3D Gain Plot H Plane (5800MHz)



*Simulated gain and pattern measurements are conducted on a 300mm diameter ground plane and exclude cable loss.

Part No.			
		CMC-7-60-1-2-RANP	CMC-7-60-1-8-RANP
Electrical Data			
Frequency Range (MHz)		698-960 / 1710-6000	698-960 / 1710-6000
Operational bands		2G/3G/4G/WLAN/WIMAX	2G/3G/4G/WLAN/WIMAX
Radiation pattern		Omni-directional	Omni-directional
Typical VSWR		< 2:1	< 2:1
Peak Gain*	698-960MHz	3dBi	3dBi
	1710-2700MHz	7dBi	7dBi
	4900-6000MHz	7dBi	7dBi
Passive intermod. (2x20W, 3rd ord.) dBc*		<-140	<-140
Max input power (W)		50 Watts	50 Watts
Polarisation		Vertical	Vertical
Impedance		50Ω	50Ω
Mechanical Data			
Dimensions (mm)	Height	62 (2.4")	62 (2.4")
	Diameter	170 (6.7")	170 (6.7")
Operating temp (°C)		-30° / +70°C (-22° / 158°F)	-30° / +70°C (-22° / 158°F)
Material		Geloy PC/ASA (meets UL746C f1)	Geloy PC/ASA (meets UL746C f1)
Flame retardance		UL94-V0 (chlorine and bromine free)	UL94-V0 (chlorine and bromine free)
Colour		White	White
Ingress Protection		IP67	IP67
Mounting Data			
Fixing		Panel mount	Panel mount
Mounting hole diameter (mm)		18 (3/4")	18 (3/4")
Max panel thickness (mm)		10 (0.4")	10 (0.4")
Cable Data			
Type		Times Microwave TFT-LF 402	Times Microwave TFT-LF 402
Approvals		UL910 plenum rated	UL910 plenum rated
Diameter (mm)		4.06 (0.16")	4.06 (0.16")
Length (m)		1.2 (4')	1.8 (6')
Nominal Attenuation (dB)	698-960MHz	0.48	0.72
	1710-2700MHz	0.9	1.35
	4900-6000MHz	1.44	2.16
Termination		R/A N Plug (low PIM)	R/A N Plug (low PIM)

*Simulated on a 300mm (1ft) diameter ground plane excluding cable loss.

*Range PIM performance verified at 850 & 1900MHz under controlled conditions by Anritsu PIM Master test equipment. Units tested before shipment @ 1900MHz only.

PANORAMA ANTENNAS

Panorama Antennas Ltd
Frogmore, London, SW18 1HF, United Kingdom

T: +44 (0)20 8877 4444
F: +44 (0)20 8877 4477
E: sales@panorama-antennas.com
www.panorama-antennas.com

Copyright © Panorama Antennas Ltd. All rights reserved.